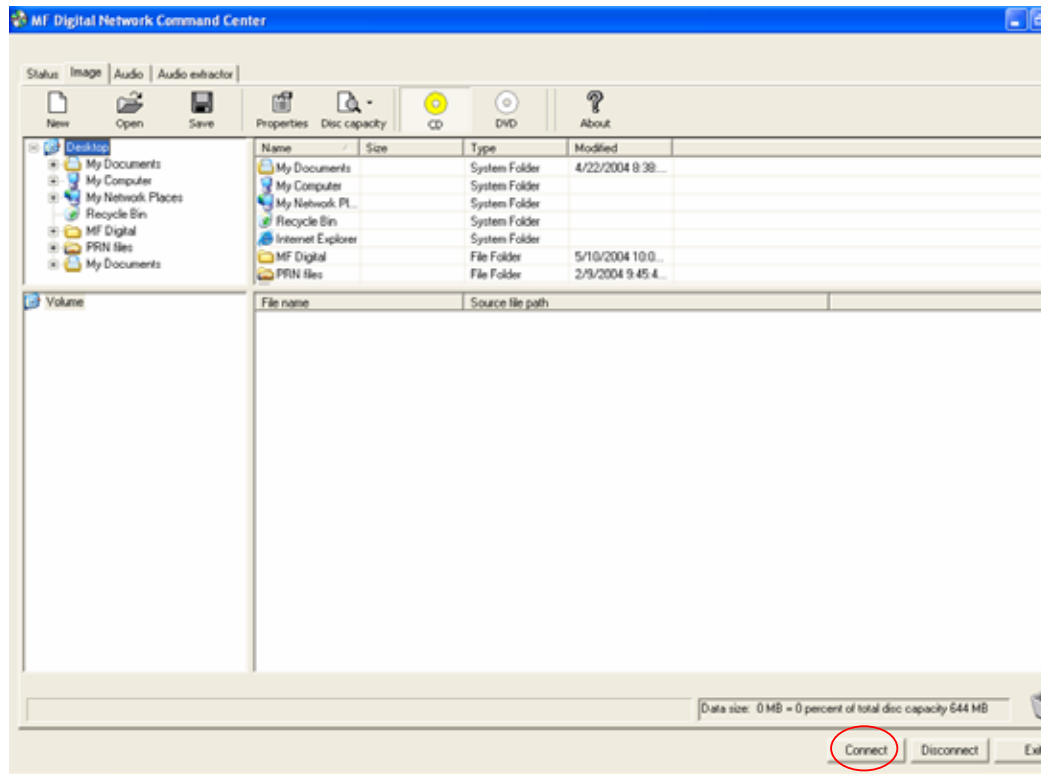


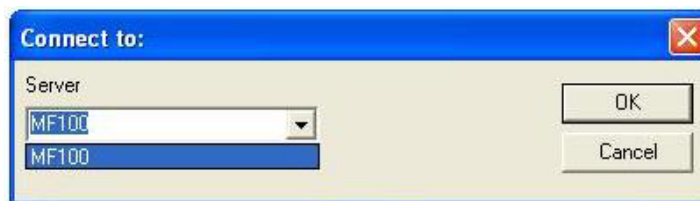
# MF Digital 5000EC + 3000EC Command Module Client

One of the most powerful features of the MF Digital EC Standalone product line is the **Command Module Client Software**. Simple to use; easy to install; license free with unlimited expandability. Using a small executable file, which requires no installation, the Command Module allows full control of any MF Digital standalone EC duplicator from any PC on a windows based network.

Here is an overview: When you double-click on the **Client.exe** the screen below appears:

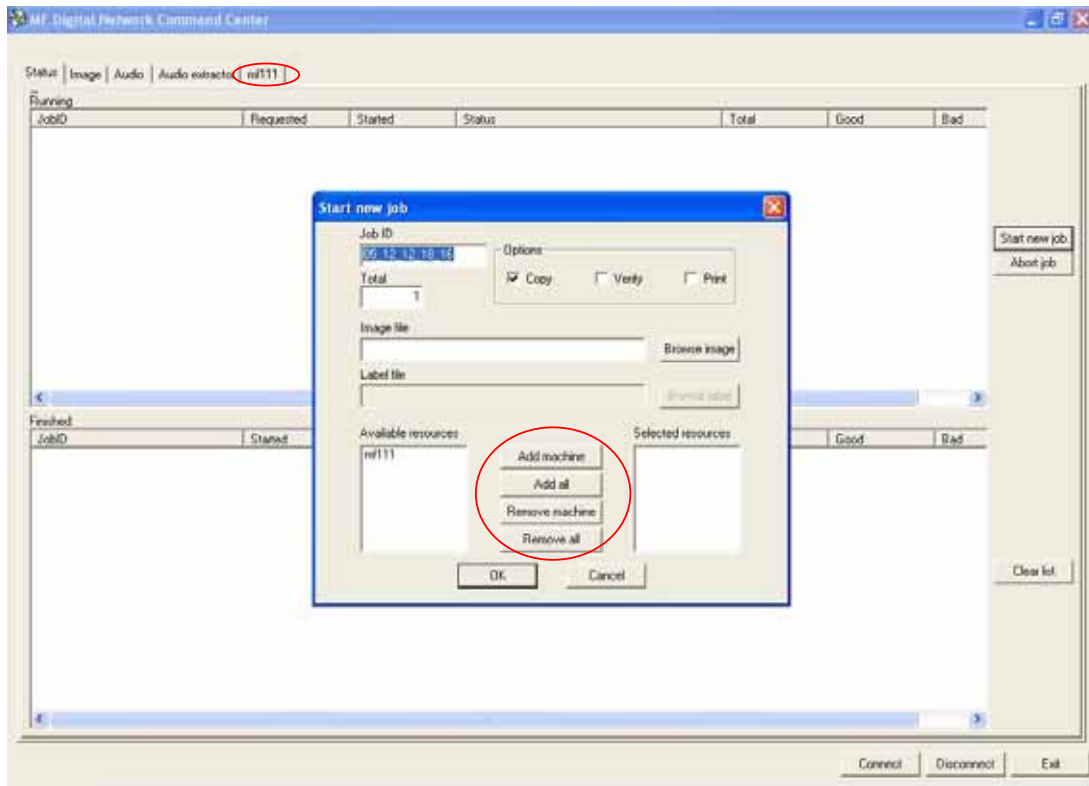


From here you can connect to any or all of the standalone EC on your network by clicking the **connect** button at the bottom right of the screen as seen above. When prompted (below) type the name designated to the MF Digital unit and click OK to connect.

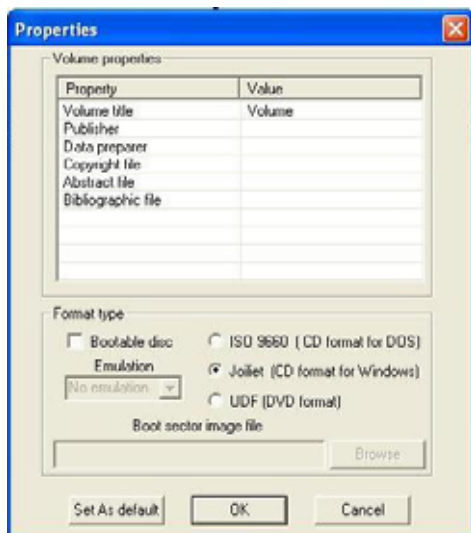


After you have connected to the duplicator you will see the **new tab** on the client software. If you have multiple MF Digital units on the network connecting all of them takes just a single click of the mouse.

# MF Digital 5000EC + 3000EC Command Module Client



As seen in the dialogue box above, the user can add or remove duplicators under the Command Module interface. This dialogue box also gives the user parameters for the job such as quantity, copy, verify, print, browse for image file and browse for label file.



The Command Module Client Software also provides the user with some powerful features for create disc images, both for audio and data.

For example, in the **Image Tab**, the user can implement disc properties to the CD or DVD such as Volume title, bootable disc file, ISO 9660, Joliet or UDF (DVD only) formats.

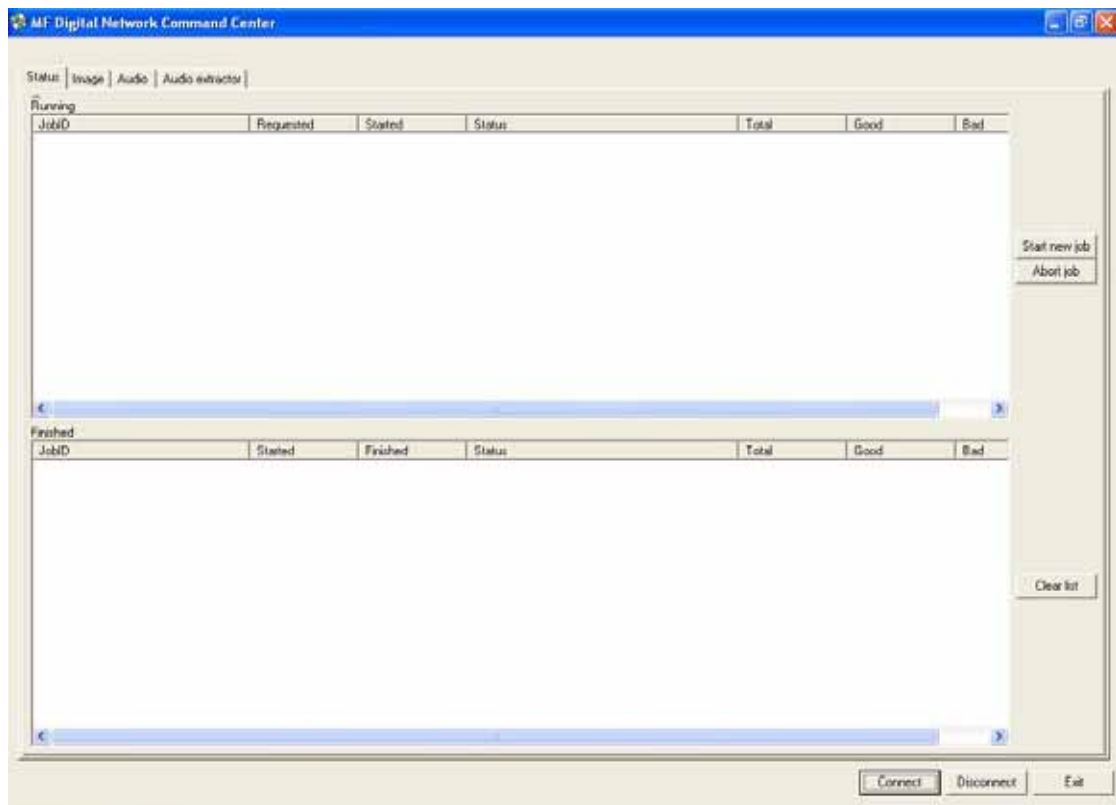
# MF Digital 5000EC + 3000EC Command Module Client

Here is another example, but in the **Audio Tab**, for the user to edit an audio track.

Our editing features include the ability to clip frames, control pre-gap length, insert sub-index points, insert a copy prohibit flag and enter ISRC information.



Another important user interface of the client software is the **Status Tab** of the software. This allows any user to view which jobs are in progress and which jobs are completed. Under the **running** window both active jobs and queued jobs will appear. With the Command Module there is an unlimited number of queued jobs a user or group of users can have.



# MF Digital 5000EC + 3000EC Command Module Client

To wrap things up, here is an overview of how to configure the MF Digital EC duplicator so it can be viewed and found on the network.

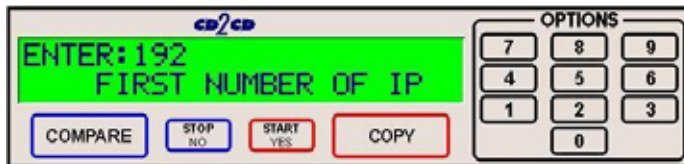
First, the user will access the network settings of the duplicator through **Option #7** on the LCD touch-pad.



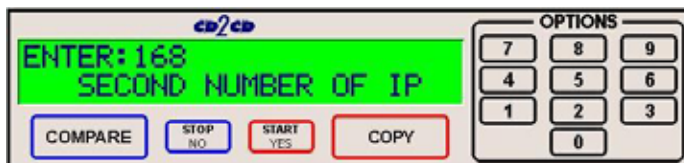
Next, the user will enter the name of the duplicator so it may be found on the network. In this example we used **MF100**.



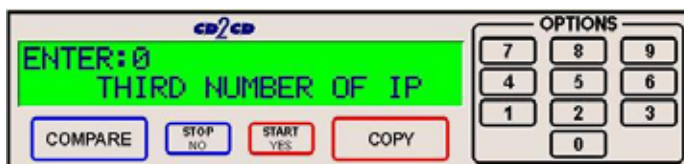
Here, we disable the DHCP setting so a specific IP address and subnet can be entered.



The standalone duplicator now prompts the user to enter the IP address for the unit.



The system will ask for each set of numbers of the IP address. Using the touch-pad, each number can be entered.

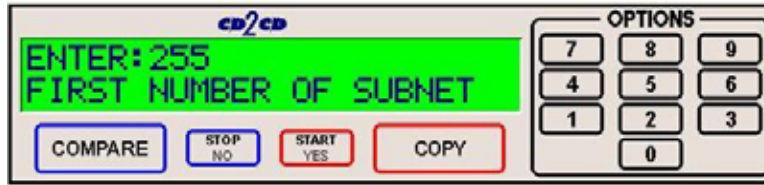


As you can see in this example the IP address is 192.168.0.20



# MF Digital 5000EC + 3000EC Command Module Client

Finally, the subnet is entered the same as the IP address, above. Here is a screen shot of the first prompt.



Without showing the rest of the screens, our subnet for this example is 255.255.255.0

---

In summary, MF Digital believes the feature rich software of our Command Module suite provides the user with unprecedented capabilities. With unlimited expandability of the Command Module it is simple to configure a 2 or even a 20-tower and/or autoloader production station!

If you need further information please contact your local dealer or MF Digital directly.



(631) 249 - 9393