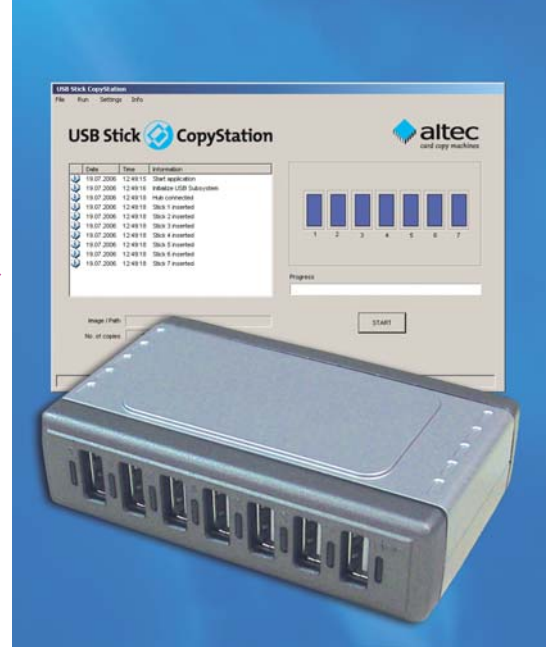


USB Stick CopyStation

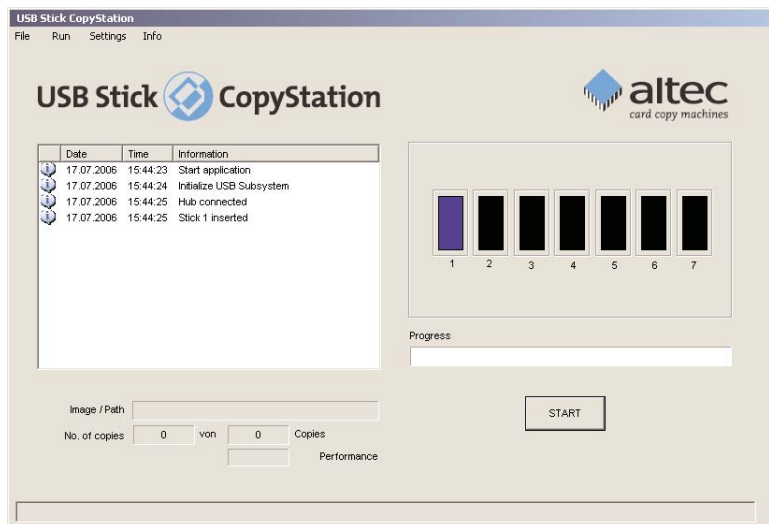


Software and USB 2.0 hub – hardware part of the USB Stick CopyStation

24 Months Warranty

Small scale programming of USB memory sticks

- ◆ Entry level solution for the duplication of data images to up to seven USB memory sticks simultaneously
- ◆ In-house developed copy software with the same «look & feel» as all other altec CopyStations; for Windows 2000 and XP; user interface selectable for English or German
- ◆ Job Wizard to specify parameters for the copy job such as the image file name, number of copies and whether to verify after writing or not
- ◆ Supplied with active USB 2.0 hi-speed hub*; compatible with USB 2.0 and 1.1 memory sticks
- ◆ Copies up to seven USB 2.0 Sticks with 256 MB in less than 2 min. (speed depends on USB stick type and USB connection)
- ◆ Optional software interface for data exchange with external applications to allow customization of individual cards, e.g. with serial number or data encryption
- ◆ Software option for creating and copying smaller image files. With this, USB sticks where much less data is stored than the actual storage capacity permits can be programmed much quicker.



USB Stick CopyStation Software

USB Stick CopyStation	Item no.
USB Stick CopyStation	B31AL181
Software interface for e.g. external serialization	31AL1811
Software option	
Smaller Image Files	31AL1812

Technical Specifications

Hardware		Power Requirements	
– Interface	USB 2.0 Hi-Speed	– DC Input Voltage	USB Bus powered or via power supply with 3 A at 5 V (100-230V)
– Slots	for seven USB Sticks; 11.5 mm gap between the slots	Performance	
– Dimensions	99.6 x 59.5 x 25.7 mm (WxDxH)	– Data transfer rate	7 USB 2.0 Sticks à 256 MB in less than 2 min. (speed depends on USB Stick type & USB connection)
Environmental Specifications		Software	
– Humidity	5% to 95%, non-condensing	– Compatible with	Windows 2000 and XP
– Temperature	0° to +40°C (operating)		

Solstice Technologies

For more information call toll free 1-866-357-4321 or e-mail: <mailto:sales@solstice-inc.com>
Ph: 240-235-0602 Fax: 240-359-4090